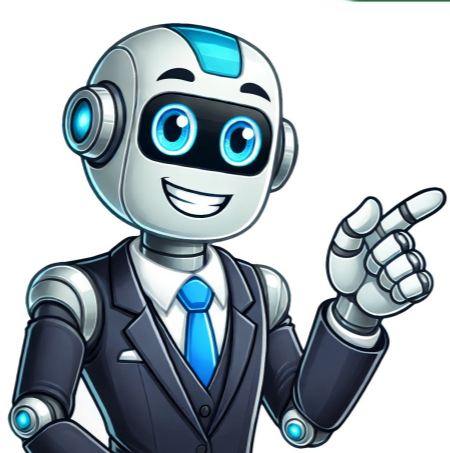


Click to prove  
you're human































@Marco19591 Welcome to the HP support community.I understand that you are looking for HP Print and Scan Doctor's latest version, I am glad to assist you.Here is the link to download the latest version of HP Print and Scan Doctor:- [Click here](#)Keep me posted.To thank me for my efforts to help you, please mark my post as an accepted solution so that it benefits several others.Cheers. Sandytechy20 I am an HP Employee View solution in original post Hi @Novafeng, Welcome to HP Support Community. Thank you for posting your query, I will be glad to help you. Here are general steps you can follow. Visit the Official Samsung Support Page: Go to the Samsung support website ( and navigate to the support section. Look for a "Downloads" or "Drivers" page. Enter Your Printer Model: Enter your specific printer model in the search or product finder tool on the support page. Locate Software Downloads: Once you've found your printer model, look for a section that provides software or driver downloads. You might find the Easy Printer Manager software listed there. Download and Install: Follow the instructions to download the Samsung Easy Printer Manager software for your operating system (Windows or Mac). After downloading, run the installer to install the software. If you can't find the software on the official Samsung website or if the support structure has changed since my last update, consider reaching out to Samsung customer support for assistance. They should be able to guide you to the appropriate download. Remember to be cautious and only download software from official sources to avoid potential security risks. I hope this helps. Take care and have a good day. Please click "Accepted Solution" if you feel my post solved your issue, it will help others find the solution. Click the "Kudos/Thumbs Up" on the bottom right to say "Thanks" for helping! Alden4HP Support Raj\_05HP Support Community Moderator Hi @jackeymackson Welcome to the HP Support Community. Try restarting the print spooler - 1. Turn off the printer using the power button. 2. Search Windows for run, and click the Run Windows application in the list of results. 3. Type services.msc in the Run window, and then press Enter on the keyboard. The Services menu opens. 4. Right-click Print Spooler and select Stop. 5. After the service has been stopped, close the service window and use Windows Explorer to browse to C:\Windows\System32\Spool\PRINTERS. 6. Delete all files inside the PRINTERS folder. 7. Restart your computer. 8. Turn on your printer. 9. Try printing again. If the issue still persists, try these steps - Step 1 HP Print and Scan Doctor - Click on this link to download and run HP Print and Scan Doctor Step 2 Re-install the printer drivers - 1. In the search box, type and open "Uninstall a Program". 2. Look for HP Printer software. 3. Right-click to uninstall. 4. In the search box, type and open "Devices and printers". 5. In the Devices and Printers, look for your HP printer. If you see it listed right-click on it and choose "Delete" or "Remove Device". 6. Open the run command with the "Windows key + R" key combo. 7. Type printui.exe /s and click Ok. (Note: there is a space in between "printui.exe" and "/s"). 8. Click on the "Drivers" tab. 9. Look for HP Printer driver. If you see it Click on it and click "Remove" at the bottom. 10. Select Ok. 11. Select Apply and Ok on the Print Server Properties windows. 12. Close Devices and Printers Once the software and drivers are removed. 13. Restart the computer. 14. Download and install the software and drivers from here. 15. Click on the downloaded file and follow the on-screen instructions. Hope this helps! Keep me posted. Please click "Accept as Solution" if you feel my post solved your issue, it will help others find the solution. Click the "Kudos, Thumbs Up" on the bottom right to say "Thanks" for helping! Have a great day! Asmita I am an HP Employee View solution in original post