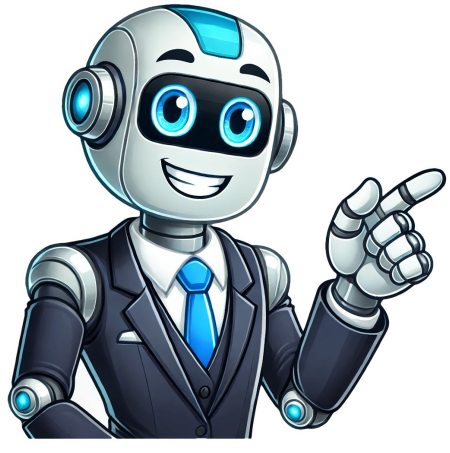


I'm not a robot





































When it comes to gaming, having the right setup can significantly enhance your experience. One frequently asked question among gamers is: "Is Logitech compatible with Xbox?" This inquiry leads us to explore the compatibility between Logitech peripherals and Xbox consoles comprehensively. As Logitech continues to be a leading brand in gaming accessories, understanding how these devices work with Xbox can help gamers make informed decisions for their setups.

**Understanding Logitech's Product Line**Logitech is renowned for its wide array of gaming peripherals, including keyboards, mice, headsets, and more. The company's commitment to quality and innovation has made it a beloved choice among gamers. However, compatibility varies across products and platforms, so it's vital to dive deeper into which Logitech devices are Xbox-friendly.

**Key Categories of Logitech Gaming Products**Logitech offers several gaming product categories, each designed to enhance the gaming experience:

- Gaming Mice:** With customizable buttons and precision sensors, these mice are designed for gamers looking for an edge.
- Gaming Keyboards:** Known for their mechanical switches and customizable RGB lighting, these keyboards appeal to both casual and competitive players.
- Gaming Headsets:** With immersive sound quality and comfortable design, Logitech headsets are popular among gamers who prioritize audio quality.
- Gamepads and Controllers:** Essential for console gaming, Logitech also offers gamepads that provide an alternative to traditional controllers.

**Logitech and Xbox Compatibility**As we delve into the world of Logitech peripherals and Xbox compatibility, it's crucial to understand which devices work seamlessly with the Xbox console lineup.

**Logitech Mice and Keyboards**Most gaming mice and keyboards by Logitech are designed primarily for PC gaming. However, many Xbox users seek to use these devices to enhance their gaming experience. How to Use Logitech Keyboards and Mice with XboxThe Xbox consoles have gradually improved their compatibility with non-Xbox peripherals. Here's how you can connect Logitech mice and keyboards to Xbox:

- USB Cable Connection:** If your Logitech keyboard or mouse has a USB connection, simply plug it directly into the Xbox's USB ports. This method typically works for wired devices, allowing for immediate recognition and setup.
- Wireless USB Dongle:** Many Logitech devices come with a wireless USB dongle. Insert the dongle into the Xbox's USB port, and the device should be recognized automatically.
- Bluetooth Connectivity:** As of recent updates, certain Xbox models support Bluetooth devices. Check if your Logitech peripherals have Bluetooth capability, and if so, pair them through the Xbox settings. While you may have success in using Logitech mice and keyboards for casual games and navigation, it's essential to note that not all games are optimized for keyboard and mouse inputs. Some titles may not provide full functionality, so performance can vary.

**Logitech Controllers**Logitech's traditional gamepads have garnered attention, particularly the Logitech G series. However, it's important to clarify whether these controllers are compatible with Xbox consoles.

**Logitech Controllers and Xbox**Logitech controllers, particularly those designed specifically for PC gaming, are generally not compatible with Xbox consoles. This is due to Xbox's proprietary technology that is not supported by Logitech gamepads. Therefore, if you're looking for a controller primarily for Xbox gameplay, consider official Xbox controllers or those designed specifically for that platform.

**Logitech Headsets and Xbox**When it comes to audio, having a quality headset can be a game-changer. Logitech offers several headsets that gamers adore, but compatibility with Xbox varies among models.

**Connecting Logitech Headsets to Xbox**Logitech headsets typically come in two primary forms: wired and wireless. Here's how you can connect them to your Xbox:

- Wired Headsets:** If your Logitech headset has a 3.5mm audio jack, you can plug it directly into the Xbox controller. This connection usually works seamlessly, providing audio and chat functionalities.
- Wireless Headsets:** For wireless models, check if your headset uses a USB dongle. Simply plug the dongle into the Xbox USB port, and upon pairing, you should be good to go. Note that some Logitech wireless headsets may require specific software or drivers not available on Xbox.

**Logitech G930 and G533:** A Closer LookTwo models often mentioned in discussions about Logitech headsets are the G930 and G533. Both offer exceptional sound quality and comfort, but here's how they stand with Xbox compatibility:

- G930:** While primarily designed for PC use, you can use the G930's USB dongle with Xbox One devices. However, the overhead software (Logitech Gaming Software) requires a PC for customization.
- G533:** Similar to the G930, this model primarily caters to PC gamers, and while you can technically connect it to Xbox via the USB dongle, full functionality will not be supported.

**The Future of Logitech and Xbox Integration**As gaming technology continues to evolve, compatibility is improving across various peripherals. Logitech has been actively updating its products to keep pace with the dynamic gaming landscape.

**Next-Generation Xbox Consoles**With the arrival of next-generation Xbox consoles, players can expect more robust features and capabilities. Logitech is likely to continue optimizing its peripherals, enhancing support for Xbox gamers. As Microsoft further develops its consoles, addressing compatibility issues with non-Xbox hardware will be essential. This integration could lead to exciting improvements for Logitech users looking to enhance their gaming experience.

**The Emergence of Cross-Play**Cross-play capabilities are gaining momentum in the gaming community. This trend allows gamers on different platforms to play together. Logitech's focus on providing high-performance peripherals aligns perfectly with this shift, potentially leading to future products designed to seamlessly work across multiple platforms, including Xbox.

**Conclusion: Is Logitech Compatible with Xbox?** Final ThoughtsIn summary, Logitech's compatibility with Xbox largely depends on the type of device you wish to use. While many Logitech mice and keyboards can be connected via USB or Bluetooth, their functionality can vary based on the game. Logitech controllers, however, generally do not support Xbox consoles, necessitating the use of official controllers. Logitech headsets present a mixed bag as well, with wired connections often being the most straightforward solution for gamers. Wireless headsets can offer convenience but require more setup and may not reach the same level of compatibility. For gamers keen on enhancing their Xbox setups, keeping abreast of Logitech's evolving product compatibility will be key. Brands like Logitech continuously innovate, and as support grows, so will your gaming experiences. In the meantime, explore the vast range of gaming peripherals available, and make informed choices based on your gaming preferences—ensuring an optimal gaming environment every time you sit down to play.

**Is Logitech compatible with Xbox consoles?**Yes, Logitech has developed various peripherals that offer compatibility with Xbox consoles. Many of their gaming accessories, such as controllers and headsets, have been designed to work seamlessly with Xbox platforms. However, it's essential to check the specific product details to ensure compatibility, as not all Logitech devices support Xbox. For instance, Logitech's popular G series gaming accessories, including gaming mice, keyboards, and headsets, are primarily aimed at PC gamers. However, certain models are specially crafted to provide features that can also enhance the Xbox gaming experience, especially when used with Xbox-supported apps and services. What Logitech products can be used with Xbox?Logitech has a range of products that can enhance your Xbox gaming experience. These include gaming headsets, such as the Logitech G Pro X and G733 models, which offer high-quality audio features and microphone options designed for competitive gaming. Additionally, Logitech's gaming controllers, like the F310 or G F640 gaming mouse, can sometimes be adapted for use with Xbox through various software and settings adjustments. It's important to note that while some Logitech products can work with Xbox, they may not provide full functionality as they do on a PC. For the best performance, always refer to the product documentation or Logitech's official website for detailed compatibility information and instructions on how to configure their products for use with Xbox systems.

**Can I use a Logitech gaming mouse and keyboard with Xbox?**While the Xbox consoles primarily support traditional game controllers, it is possible to use a Logitech gaming mouse and keyboard in certain scenarios. Xbox supports mouse and keyboard inputs for specific games and applications, enabling you to connect compatible devices. However, this feature is not universally available across all titles. To use a Logitech mouse and keyboard with your Xbox, you'll need to ensure that both devices are compatible and that the games you intend to play support mouse and keyboard controls. Popular games, such as Fortnite and Call of Duty: Warzone, allow for this type of input, giving players more flexibility and precision during gameplay.

**Do Logitech gaming headsets work with Xbox?**Many Logitech gaming headsets are designed to be versatile and can work with Xbox consoles. For instance, models like the Logitech G PRO X and G533 feature an audio jack that can be directly connected to the Xbox controller, allowing for high-quality audio during gaming sessions. However, to harness all the capabilities that Logitech headsets offer, such as sound customization and equalizer settings, you might need to use them on a PC with the Logitech G Hub software. While basic functionalities may be available on Xbox, advanced features usually require connection to a PC for optimal use. Are there any limitations when using Logitech products with Xbox?Yes, there are some limitations when using Logitech products with Xbox consoles. First, not all Logitech devices are designed for Xbox compatibility. While many peripherals can connect and function, features such as programmable buttons or advanced sound settings may not work as intended on the Xbox platform. In addition, the gaming experience may differ based on how the device interfaces with the console. For instance, even when using a compatible headset, the surround sound capabilities may be limited compared to using the same headset on a PC. Always be sure to check compatibility and any limitations before making a purchase to ensure it meets your gaming needs. How do I connect my Logitech devices to Xbox?Connecting Logitech devices to your Xbox can vary based on the type of device you are trying to use. For headsets, the process usually involves plugging the headset's audio jack into the Xbox controller. After connection, you may need to adjust the audio settings in the Xbox system settings to ensure that the headset functions correctly for both game audio and chat features. For more advanced Logitech peripheral devices, such as keyboards or mice, connection methods may differ. Some devices may require USB adapters or specific configurations within the Xbox settings to operate correctly. Always refer to the manufacturer's instructions for specific details on connecting and configuring Logitech products with Xbox consoles. Is it worth investing in Logitech products for Xbox gaming?Investing in Logitech products for Xbox gaming can be worthwhile, particularly if you value high-quality audio and reliable build quality. Logitech's gaming headsets are known for their sound performance and comfort, making long gaming sessions more enjoyable. Additionally, their products often come with features that cater to serious gamers, such as customizable settings and a solid warranty. However, your investment should reflect your gaming needs and style. If you primarily play titles that support mouse and keyboard functionality or require a headset for online multiplayer games, the Logitech's offerings may be a great fit. Ultimately, it's essential to evaluate your gaming preferences and consider how Logitech products will enhance your overall Xbox experience.

Published by Pfleger Hans on 9. December 2024The Logitech G Pro X Wireless is a popular gaming headset among competitive gamers, known for its high-quality audio, wireless connectivity, and comfortable design. If you're an Xbox gamer, you might wonder: Can I use the Logitech G Pro X Wireless with my Xbox console? The answer is both yes and no, depending on the specific scenario and setup. This blog post explores the compatibility of the Logitech G Pro X Wireless with Xbox consoles and provides solutions for maximizing its functionality. Unfortunately, the Logitech G Pro X Wireless is not natively compatible with Xbox Series X/S or Xbox One. This is because the headset uses Logitech's Lightspeed Wireless USB receiver, which isn't supported by Xbox consoles. Unlike PlayStation, Xbox does not currently support audio devices through third-party wireless USB dongles. If you connect the Logitech G Pro X Wireless headset to an Xbox controller using a 3.5mm audio cable, you can use it in wired mode. The microphone and audio will work, but you lose the wireless functionality and features like DTS surround sound. Some gamers use third-party wireless adapters to make the headset work wirelessly on Xbox. However, this can result in: Latency issues: Loss of advanced features like surround sound or equalizer profiles. Compatibility is not guaranteed, and it's not officially supported by Logitech. The Logitech G Pro X Wireless does not have native Bluetooth support. If you're looking for a wireless connection on Xbox, a different headset with native Xbox Wireless or Bluetooth capabilities might be better. Excellent audio quality when used via 3.5mm audio cable. Retains comfort and build quality in wired mode. Works for basic audio and communication needs. No wireless functionality on Xbox. Loss of DTS surround sound and software-based customization. Limited features compared to use on PC or PlayStation. If you're looking for a headset with similar quality and native compatibility with Xbox, consider these alternatives: Logitech G Pro X Wired Gaming Headset: Fully compatible with Xbox via 3.5mm connection. SteelSeries Arctis 9X: Designed specifically for Xbox, with Xbox Wireless support. Razer Kaira Pro: Features Xbox Wireless and Bluetooth support. Xbox Wireless Headset Official Xbox product with excellent compatibility. No Xbox Hub software. While basic functionalities may be available on Xbox, advanced features usually require connection to a PC for optimal use. The detachable microphone works when connected via a 3.5mm audio cable to the Xbox controller. No, the DTS surround sound feature is only available on platforms where the Logitech G HUB software is supported, such as PC. While the Logitech G Pro X Wireless is a fantastic headset, its wireless capabilities are not compatible with Xbox consoles. If you're set on using this headset, you'll need to connect it via a 3.5mm audio cable for basic functionality. For a seamless wireless experience, consider investing in a headset specifically designed for Xbox. By understanding these limitations, you can make an informed choice about whether the Logitech G Pro X Wireless meets your gaming needs or if another headset might be a better fit. Happy gaming! Reddit and its partners use cookies and similar technologies to provide you with a better experience. By accepting all cookies, you agree to our use of cookies to deliver and maintain our services and site, improve the quality of Reddit, personalize Reddit content and advertising, and measure the effectiveness of advertising. By rejecting non-essential cookies, Reddit may still use certain cookies to ensure the proper functionality of our platform. For more information, please see our Cookie Notice and our Privacy Policy. Plug headphones into the base station. If they don't connect, press the sync button on the console. Xbox Series X or S consoles are only compatible with wireless headsets designed for Xbox One and Series X|S. Some wireless Xbox headphones and headsets use a wireless adapter that plugs into a USB port on the console. This article explains how to connect compatible wireless headphones to an Xbox Series X or S console. This method is relevant only to headsets and headphones that are designed for Xbox One or Xbox Series X or S and don't have a wireless USB adapter. If that describes your headphones or headset, you can use this method to connect. Turn on your Xbox Series X or S. If your headset has a base station, plug it in. Wait and see if your headphones pair automatically. If the headphones don't pair automatically, press the sync button on your Xbox Series X or S. Press and hold the power button on your headphones until they connect to your console. If your headphones or headset has a sync button, press that instead. Your headphones should be connected now. If this didn't work, try connecting your headphones to the Xbox Series X or S using a USB cable, then turn the headphones on. Once they connect, you can unplug the USB cable. You may also need to ensure that your headphones are fully charged first. If your headphones or headset came with a wireless USB dongle, and they are specifically designed to work with Series X and S consoles, then you can plug the dongle into a USB port on the console. If the headset or headphones were designed for Xbox One, they may or may not work. Check with the manufacturer if you have trouble connecting. Here's how to connect wireless headphones to your Xbox Series X or S using a dongle: Turn on the Xbox Series X or S. Plug the wireless adapter into a USB port on your Xbox. Turn on your headset or headphones. Wait to see if the headset or headphones connect automatically. If they didn't connect, check your USB dongle for a switch. Headsets designed to work with both Xbox and PC have a switch on the dongle. Switch it to Xbox to connect. Your headphones or headset should connect. If your headphones don't connect, contact the manufacturer. The dongle may not be compatible with Xbox Series X or S. In general, most wireless headphones and headsets that worked with the Xbox One will also work with Xbox Series X or S. Headphones designed specifically for Xbox Series X or S will also do the trick. Wireless headphones and headsets that weren't specifically designed for any Xbox console, unfortunately, won't be able to connect. The biggest hurdle here is that neither the Xbox Series X or S support Bluetooth, so you can't just use any Bluetooth headset or headphones. The Xbox Series X and S also don't support most USB wireless dongles, so there's a good chance that your headset that's designed for use with a PC won't work with your Xbox. Xbox Series X or S has a proprietary wireless protocol, so these consoles primarily work with headphones that were designed to use that protocol. Additionally, some wireless headsets and headphones have a wireless dongle that's designed to be plugged into a USB port on your Xbox Series X or S, so they can be used as well. Thanks for letting us know! Get the Latest Tech News Delivered Every Day Subscribe Tell us why! Reddit and its partners use cookies and similar technologies to provide you with a better experience. By accepting all cookies, you agree to our use of cookies to deliver and maintain our services and site, improve the quality of Reddit, personalize Reddit content and advertising, and measure the effectiveness of advertising. By rejecting non-essential cookies, Reddit may still use certain cookies to ensure the proper functionality of our platform. For more information, please see our Cookie Notice and our Privacy Policy. Connecting a Logitech wireless headset to your Xbox One can enhance your gaming experience by providing high-quality audio and allowing you to communicate with your teammates. Whether you're immersed in an intense battle or enjoying the immersive soundscapes of your favorite games, a wireless headset can greatly enhance the audio experience on your Xbox One console. In this guide, we will walk you through the step-by-step process of connecting your Logitech wireless headset to your Xbox One. We'll cover everything from ensuring compatibility to pairing the headset with the adapter and adjusting the audio settings. You'll be up and running in no time, ready to fully enjoy all the audio features that your Logitech headset has to offer on your Xbox One. Before we get started, it's important to note that not all Logitech wireless headsets are compatible with the Xbox One. Ensure that you have a headset that specifically states its compatibility with the Xbox One console. This will save you time and frustration later on. Additionally, make sure that your Xbox One console is updated to the latest system software to ensure smooth compatibility. Now, let's dive into the step-by-step process of connecting your Logitech wireless headset to your Xbox One and enjoy the immersive audio experience it offers. Step 1: Check for Compatibility The first step in connecting your Logitech wireless headset to your Xbox One is to ensure compatibility. Not all Logitech wireless headsets are designed to work with the Xbox One console, so it's essential to check for compatibility before proceeding. This will prevent any unnecessary frustration and ensure a smooth experience. To check for compatibility, refer to the documentation that came with your Logitech headset. Look for any specific mentions of compatibility with the Xbox One. If your headset is listed as being compatible, you're good to go. However, if it's not mentioned or if there's any doubt, it's best to reach out to Logitech's support team or consult their website for clarification. Additionally, it's important to ensure that your Xbox One console is updated to the latest system software. This will ensure that you have all the necessary drivers and firmware in place to support the Logitech wireless headset. To check for updates, navigate to the settings menu on your Xbox One and select "System". From there, choose "Updates" and enable the option to automatically download and install updates. This will ensure that your console stays up to date and supports the latest peripherals. By confirming compatibility and ensuring that your Xbox One console is updated, you will lay the foundation for a seamless connection process. Once you have checked these requirements, you can proceed to the next step of connecting the wireless adapter to your Xbox One. Step 2: Connect the Wireless Adapter Once you have confirmed the compatibility of your Logitech wireless headset with the Xbox One, it's time to connect the wireless adapter. The wireless adapter allows your headset to communicate wirelessly with the console, providing you with the freedom to move around and enjoy your games without being tethered by cables. Begin by locating the USB port on your Xbox One console. The port is usually located on the front or side of the console. Plug the wireless adapter into the USB port. Make sure it is securely inserted to ensure a stable connection. You'll notice that the adapter has a small LED indicator light. This light will turn on, indicating that the adapter is receiving power. Next, turn on your Xbox One console and allow it to detect the wireless adapter. Once the adapter is detected, the console will prompt you to install any necessary drivers or updates. Follow the on-screen instructions to complete the installation process. This step may require an internet connection, so ensure that your console is connected to the internet either through a wired or wireless connection. Once the installation is complete, the wireless adapter is ready to be paired with your Logitech wireless headset. The next step will guide you through the pairing process, enabling your headset and adapter to establish a secure wireless connection. Step 3: Pair the Headset with the Adapter With the wireless adapter connected to your Xbox One, it's time to pair your Logitech wireless headset with the adapter. This step ensures that your headset and adapter can communicate with each other wirelessly, allowing you to enjoy crystal-clear audio and seamless gameplay. Start by turning on your Logitech wireless headset. Most Logitech headsets have a power button located either on the headset itself or on the wireless adapter. Press the power button to turn on the headset. The LED indicator on the headset will usually start blinking to indicate that it's in pairing mode. On the wireless adapter, you'll find a pairing button. Press and hold the pairing button until the LED indicator on the adapter starts flashing. This puts the adapter into pairing mode and allows it to search for nearby devices, including your Logitech headset. Once the adapter and headset are in pairing mode, they will automatically search and connect to each other. This process may take a few seconds. Once the connection is established, the LED indicator on both the adapter and the headset will become steady or change color, indicating a successful pairing. It's important to note that the specific pairing process may slightly vary depending on the model of your Logitech headset and wireless adapter. Therefore, it's crucial to refer to the user manual or documentation that came with your headset for detailed instructions on the pairing process. Once your Logitech wireless headset is successfully paired with the wireless adapter, you're ready to move on to the next step and adjust the audio settings on your Xbox One console. Step 4: Adjust Audio Settings on Xbox One After successfully pairing your Logitech wireless headset with the adapter, it's time to adjust the audio settings on your Xbox One console. This step ensures that you have optimal sound quality and that the headset is properly integrated with your gaming experience. Start by powering on your Xbox One console and accessing the system settings. Navigate to the "Settings" menu and select "Audio". Here, you will find various audio options and settings that you can customize according to your preferences. One important setting to check is the audio output. Ensure that the audio output is set to "Headset" or "Headset & Speakers". This will route the audio to your Logitech wireless headset, allowing you to hear the game audio and chat with your friends through the headset. Additionally, you can adjust the audio balance between game audio and chat audio. This can be useful if you want to prioritize in-game sound effects or increase the volume of chat communication. Experiment with the settings and find a balance that suits your needs. If your Logitech headset offers additional audio customization options, such as equalizer settings or surround sound, you can explore those settings as well. These options can enhance the audio experience and provide personalized sound profiles that cater to your gaming preferences. Once you have adjusted the audio settings to your liking, take a moment to test the headset by launching a game or playing a media file on your Xbox One console. Ensure that you can hear the audio clearly and that the volume levels are comfortable. Make any necessary adjustments to ensure optimal audio clarity and enjoyment. With the audio settings properly adjusted, you're now ready to move on to the final step of testing the headset to ensure everything is working correctly. Step 5: Test the Headset After adjusting the audio settings on your Xbox One console, it's essential to test your Logitech wireless headset to ensure that everything is working correctly. Testing the headset will allow you to confirm proper audio output, microphone functionality, and overall performance. Start by launching a game or playing a media file on your Xbox One console that includes sound effects and dialogue. Pay attention to the audio output through your Logitech wireless headset. Check if you can hear the in-game sounds clearly, such as footsteps, explosions, or background music. Adjust the volume if necessary to achieve a comfortable listening experience. Next, test the microphone functionality of your Logitech wireless headset. Choose a game or app that supports voice chat, or join an online multiplayer session where you can interact with other players. Speak into the headset's microphone and listen for your voice through the headphone speakers. Ensure that the microphone captures your voice accurately and that there are no audio distortions or background noise. If you encounter any issues during the testing process, there are a few troubleshooting steps you can try. First, check the mute button or switch on your headset to ensure that it is not accidentally muted. Make sure the microphone is properly positioned and not obstructed. You can also try restarting your Xbox One console or disconnecting and reconnecting the wireless adapter to troubleshoot connectivity issues. If you're still experiencing issues with your Logitech wireless headset, consult the troubleshooting guide provided by Logitech or reach out to their support team for further assistance. They can provide specific troubleshooting steps and guide you through the process of resolving any issues you may encounter. Once you have successfully tested your Logitech wireless headset and confirmed its functionality, you can now enjoy an immersive audio experience while gaming on your Xbox One console. Sit back, relax, and immerse yourself in the world of gaming with crystal-clear audio and seamless communication with your teammates. Troubleshooting Tips While connecting and using a Logitech wireless headset with your Xbox One is generally straightforward, you may encounter occasional issues. Here are some troubleshooting tips to help you resolve common problems and ensure a smooth gaming experience. 1. Check the battery: If you notice that your Logitech wireless headset is not powering on or has a low battery, make sure to charge it properly. Refer to the user manual or documentation for specific instructions on charging the headset and ensure that it is fully charged before use. 2. Verify the wireless adapter connection: If your Logitech headset is not connecting to the wireless adapter or experiencing frequent disconnections, ensure that the adapter is securely plugged into the Xbox One console. Check for any loose connections and try reconnecting the adapter. 3. Update firmware and drivers: Check for any available firmware or driver updates for both your Logitech wireless headset and Xbox One console. Keeping the firmware and drivers up to date can improve compatibility and performance. 4. Reset the headset: If you continue to experience issues, try resetting your Logitech wireless headset. Consult the user manual or Logitech's support page for instructions on resetting your specific model. 5. Adjust audio settings: If the audio quality is unsatisfactory or unbalanced, adjust the audio settings on your Xbox One console. Experiment with different audio balance settings and equalizer options until you achieve the desired audio output. 6. Test with other devices: To determine if the issue is specific to your Xbox One console or the headset itself, try connecting the Logitech wireless headset to other devices, such as a computer or mobile device. If it works fine on other devices, the issue may lie with your Xbox One console. 7. Contact Logitech support: If you have exhausted all troubleshooting options and the issues persist, it's recommended to reach out to Logitech's support team for further assistance. They can provide specific troubleshooting steps and guide you through the process of resolving any technical difficulties. By following these troubleshooting tips, you can overcome common issues and ensure that your Logitech wireless headset functions optimally with your Xbox One console. Enjoy uninterrupted gaming sessions with immersive audio and crystal-clear communication. Conclusion Connecting a Logitech wireless headset to your Xbox One can elevate your gaming experience by providing high-quality audio and seamless communication with fellow gamers. In this guide, we have walked you through the step-by-step process of connecting your Logitech wireless headset to your Xbox One console. We started by emphasizing the importance of checking for compatibility between your Logitech headset and Xbox One console. Ensuring that you have a headset specifically designed and listed as compatible with the Xbox One will save you time and frustration. Next, we guided you through the process of connecting the wireless adapter to your Xbox One console and pairing your Logitech wireless headset with the adapter. This step established a secure wireless connection between your headset and console. We then discussed adjusting the audio settings on your Xbox One console to optimize sound quality and customize your audio experience. By exploring various audio settings and options, you can enhance your gaming immersion and personalize the audio output to your preferences. After adjusting the audio settings, we emphasized the importance of testing your Logitech wireless headset. By launching a game or playing media files, you could verify audio output and microphone functionality, ensuring that your headset is working properly. Lastly, we provided troubleshooting tips to help you address common issues that may occur during the setup or usage of your Logitech wireless headset. These tips can assist in resolving connectivity, battery, or audio-related problems, ensuring a smooth and uninterrupted gaming experience. Remember, if you encounter any persistent problems, it's always a good idea to reach out to Logitech's support team for further assistance. They are well-equipped to address any specific technical difficulties you may face. With your Logitech wireless headset successfully connected to your Xbox One, you can now enjoy immersive audio, clear communication, and a heightened level of enjoyment while gaming. Get ready to dive into your favorite games and experience every sound in astonishing detail. Happy gaming!