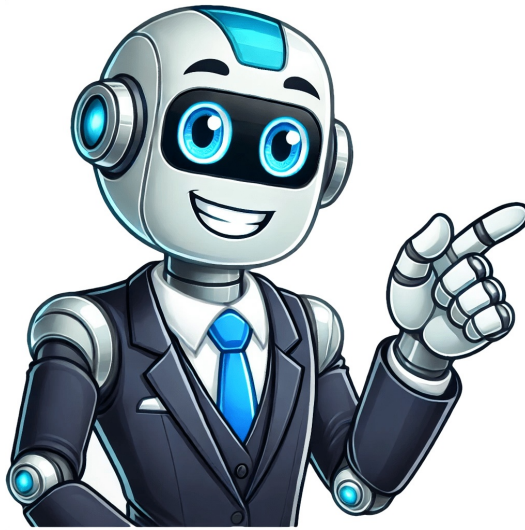


Click to verify



Delaware driving test practice free

Pass official DMV written examOnce you reach this place with 80% Passing Probability, you will be ready to pass the official DMV written exam with ease and confidence.Not available in Flashcard Mode When you are ready to embark on your driver's education, use our Delaware practice permit test to support your work. This free DMV practice test for Delaware learners is one of several revision tools we provide on ePermitTest.com, all of which are built using genuine permit test questions. If you are relatively new to drivers ed and have not accrued much experience with Delaware DMV test questions and answers, this is the ideal quiz to get you started. The questions you will be faced with here cover rules of the road, traffic signals, road signs, driving laws and all the other primary subjects that will be addressed during the DMV permit test. It is 100% free to access this quiz in full, so you can begin using from the very start of your studies without worrying about achieving a great score. Your final grade on the Delaware DMV practice test will improve in-line with your driver's theory knowledge.The Delaware permit test will be 30 questions long, but this entry-level quiz includes just 20 driving test questions and answers. Shortening the DMV practice permit test slightly means it will be easier to complete regularly whenever you have five minutes to spare. Your goal should be to gain experience with as many different DMV questions and answers as possible prior to the real 2025 DMV written test. A pass on this quiz will take 16 correct permit test answers, though you do not need to worry about hitting this grade within a certain timeframe. Once you are satisfied with your score, move on to one of our other Delaware DMV practice tests to try out some new questions. If your driver's education course is coming to an end and you would like to get prepped for the DMV test as quickly as possible, we suggest using our built-in study aids to help you find the correct DMV written test answers. The 'hint' feature can be used to ask for a clue about the correct solution, while the '50/50' feature will remove 50% of the answers you do not need from the multiple-choice list.This mixed-subject quiz will give you a taste of all the main topics you will be studying throughout drivers ed. It mirrors the approximate make-up of the real Delaware DMV permit test, presenting questions on road rules, pavement markings, road signs, traffic signals and traffic laws. In the run-up to the DMV test in Delaware, you will eventually need a greater variety of questions relating to each of these subjects. Fortunately, you will not have to go far in search of new questions as we provide Delaware DMV written test practice quizzes dedicated to each subject. Road signs are one of the most difficult subjects for new drivers; find out what you are up against by taking our DMV signs practice test for a spin when you are finished using this beginner's test.Every new driver's greatest weapon is the Delaware driving manual. Produced and distributed by the DMV, the driving manual discusses absolutely everything a new motorist must know before getting on the road. It illustrates all the road rules and road signs you could be questioned on during the randomly generated DMV test, complete with diagrams and full explanations. If you hope to pass the DMV permit test first time, it is essential that you read all the study material in the DMV book in addition to using our Delaware practice permit tests. Back to Program Home Updated for June 2025Based on official Delaware Driver's manualTo get your Delaware DMV Level One Learner's Permit, you must be at least 16 years old and pass a vision screening and the written permit knowledge test. The permit test consists of 30 multiple-choice questions based on the state's Delaware DMV 2025 Driver's Manual. To pass, you must score at least 76% (19 out of 30 questions). If you fail, you must wait at least 10 days and pay a retest fee upon the third attempt! Using our practice tests makes sure that doesn't happen. Our free online Delaware DMV Permit Practice Test mirrors the official exam. It is up to date as of June 2025 and also based on the state manual, easily providing you with questions and answers to help you study. Immediate feedback is provided on any missed questions instead of at the end of the assessment. The Level One Learner's Permit is the first phase of Delaware's Graduated Driver's License (GDL) program for drivers under 18 (up to 22 for those with an Individualized Education Program (IEP)). At age 16, after completing Driver Education, you can apply for this permit. For the first six months, you must drive with a licensed adult (age 25+ with five years of licensure). You can't drive between 10 p.m. and 6 a.m., except for work, school, or church. No phone or electronic device use is allowed while driving. After six violation-free months, you may start driving unsupervised but with nighttime restrictions. Once you've held your permit for a year with no violations, you're free to drive unsupervised. At age 18, you can apply for an unrestricted license after completing the GDL program with no violations.If you're 18 or older, the GDL phases do not apply. Once you satisfy the requirements for your Level One Learner's Permit and have practiced and feel prepared, you can take the road skills test to apply for an unrestricted license. Once you're ready to apply for the permit, go to the DMV with proof of identity (birth certificate, passport), Social Security card, two proofs of residence (utility bill, bank statement), and, if not a US citizen, proof of legal residence and sponsorship identification. If under 18, you'll need your Delaware Driver Education Certificate and signed consent (in person) from a parent or legal guardian. Submit the documents, pass a vision screening, pay the fee, and pass the official written test. Pass the first time with Premium Which of the following statements about railroad crossings is FALSE?A solid white line between lanes of traffic means thatYou should never back up your vehicle in any travel lane EXCEPTWhat does this traffic signal mean?The purpose of installing traffic cameras at busy Delaware intersections is to cite drivers whoIn Delaware, you are NOT required to stop for a school bus that is stopped on the opposite side of a roadway withAt an intersection without stop signs, yield signs, or traffic signals, drivers must yield toWhat does this sign mean?On multilane roads, the leftmost lane is intended to be used forWhen you park and leave your vehicle in the street, you should NOTIn Delaware, you may not park your vehicleWhat does this sign mean?If a truck is trying to pass you, you can help the truck driver byWhen you meet a truck coming from the opposite direction, keep as far as possible to the side to avoidTo avoid driving faster than the distance you can see ahead, you should useWhat does this sign mean?Which of the following is NOT a proper step in parallel parking on the right side of the road?On multilane roads, you should avoid driving alongside other vehicles becauseIf you're being tailgated, you shouldWhat does this sign indicate? Experience the Driving-Tests difference Since our foundation in 2010, Driving-Tests.org has led the way in online driver's education, with over a decade of experience. Our dedicated experts, bringing together more than 50 years of collective expertise, have established us as the largest non-governmental organization in the U.S. solely focused on driver education. We go beyond the official manuals, offering unique interactive experiences and support like audio guides and an AI Assistant, to cater to different learning styles and needs. Helping hundreds of thousands to ace their tests, our resources have earned a 4.7-star rating from over 14,500 reviews. Our goal is to make your path to becoming a confident driver as straightforward and effective as possible. Calculating your test results Your test results are readyPass the First Time - GuaranteedBefore you view your test results, discover how you can pass faster with Premium-Real Exam-Like Delaware QuestionsGet 650+ questions seen on the real testIf you don't pass, it costs you nothing97% Premium Users Pass on Their First TryCompare with the average US passing rate of 49% At DMV-Written-Test we strive to help everyone pass their Delaware DMV permit test on their first attempt. Thousands of prospective license holders utilize our practice tests and Delaware DMV cheat sheets every day to help better understand the questions they will face on their written tests. The practice tests and cheat sheets you will find here are based on the 2025 DE driver's license manual. They are available in both English and Spanish. The practice exams are graded instantly with feedback and correct answers provided. The data here is current as of May, 2025. The Delaware practice permit tests and cheat sheets you will find here are perfect for your Delaware Learners Permit, Delaware Driver's License, DE Senior Citizens' Refresher Test, and your DE Driver's License Renewal. All questions are from actual DMV administered written permit tests that are submitted by your peers. The written portion of the official DMV test will cover information that is taken directly from the Delaware Driver Handbook. It is designed to help you safely and effectively operate a motor vehicle. Questions will be based on rules of the road, traffic signs, and driving laws. DE DMV Permit Exam at a Glance You can expect to see 30 questions on your DE DMV exam. You must get 24 answers correct to pass your test. This represents an accuracy score of 75%. You must be a minimum of 16 years old to apply and take your DMV written test. The permit test at the Delaware DMV costs \$40. Back to Program Home Updated for June 2025Based on official Delaware Driver's manualTrying to learn new skills by using traditional study methods can seem as challenging as solving the Dover Poisoned Candy Mystery. An effective strategy must include a comprehensive resource that allows you to measure your progress. While there are multiple on-line resources available, their methods are not equally effective. The most effective study methods will meet you at your current proficiency level to provide a solid basis for the knowledge you gain.Our free online Delaware DMV knowledge practice test helps you become familiar with the information necessary to elevate your skills in a stress-free environment. By employing a similar format and question types, the practice test provides a preview of the official knowledge test. Consider it a scouting report of the challenges you may face in passing the official knowledge test. The practice test will help you identify the topics most concerning to you and allocate an appropriate amount of study time to them. Your confidence will increase as you accumulate the knowledge to master them. Using the practice test, you will have a blueprint for an effective study plan to pass the official knowledge test on your first try.This free online Delaware DMV knowledge practice test saves you valuable time by enabling you to focus on your knowledge gaps. The practice test uses 20 questions to assess your knowledge level and determine your most immediate needs. This interactive method can lead to a personalized study plan to rapidly advance your skills. It identifies the topics you don't understand and provides the information you need to start understanding them. If you submit an incorrect answer, the practice test will explain the correct one. The practice test bases this instruction on the most reliable and authoritative information you'll find. It outperforms any traditional study resource, such as study guides, in providing you with comprehensive instruction. Study guides will train you to memorize the answers to the questions without helping you figure out the details you don't understand. The practice test equips you with the information to thoroughly discuss those details and apply them to various scenarios. You will not have to rely on guesswork when answering difficult questions. The practice test is leading the way with a more effective study method as the launchpad for your success.Dogfish Head Brewery offers limited quantities of some beers, but you will experience potentially unlimited success by learning with the practice tests at . Pass the first time with Premium Experience the Driving-Tests difference Since our foundation in 2010, Driving-Tests.org has led the way in online driver's education, with over a decade of experience. Our dedicated experts, bringing together more than 50 years of collective expertise, have established us as the largest non-governmental organization in the U.S. solely focused on driver education. We go beyond the official manuals, offering unique interactive experiences and support like audio guides and an AI Assistant, to cater to different learning styles and needs. Helping hundreds of thousands to ace their tests, our resources have earned a 4.7-star rating from over 14,500 reviews. Our goal is to make your path to becoming a confident driver as straightforward and effective as possible. Calculating your test results Your test results are readyPass the First Time - GuaranteedBefore you view your test results, discover how you can pass faster with Premium-Real Exam-Like Delaware QuestionsGet 650+ questions seen on the real testIf you don't pass, it costs you nothing97% Premium Users Pass on Their First TryCompare with the average US passing rate of 49% At DMV-Written-Test we strive to help everyone pass their Delaware DMV permit test on their first attempt. Thousands of prospective license holders utilize our practice tests and Delaware DMV cheat sheets every day to help better understand the questions they will face on their written tests. The practice tests and cheat sheets you will find here are based on the 2025 DE driver's license manual. They are available in both English and Spanish. The practice exams are graded instantly with feedback and correct answers provided. The data here is current as of May, 2025. The Delaware practice permit tests and cheat sheets you will find here are perfect for your Delaware Learners Permit, Delaware Driver's License, DE Senior Citizens' Refresher Test, and your DE Driver's License Renewal. All questions are from actual DMV administered written permit tests that are submitted by your peers. The written portion of the official DMV test will cover information that is taken directly from the Delaware Driver Handbook. It is designed to help you safely and effectively operate a motor vehicle. Questions will be based on rules of the road, traffic signs, and driving laws. DE DMV Permit Exam at a Glance You can expect to see 30 questions on your DE DMV exam. You must get 24 answers correct to pass your test. This represents an accuracy score of 75%. You must be a minimum of 16 years old to apply and take your DMV written test. The permit test at the Delaware DMV costs \$40. Back to Program Home Updated for June 2025Based on official Delaware Driver's manualIf you don't need or want a Delaware driver's license, that's perfectly OK with us. But what if you do? If you've never driven before, obtaining a driver's license will take some time and effort. Fortunately, we can help. Our practice tests and other tools will get you started on the road (pun intended) to a driver's license. These tools will help you pass the official Delaware DMV written knowledge test on your first try. (The passing score is 80%.)(This is one of our tools: our second Delaware DMV Permit Practice Test. Like all our permit practice tests, it's designed to help aspiring drivers like you pass the DMV knowledge test. Like the official knowledge test, this practice test is based on the official Delaware driver's manual (Delaware DMV Handbook (DE Driver's Manual) 2025). All 20 questions on this practice test are multiple choice. You must choose the best or most complete answer for each question.This practice test includes questions on changing lanes, driving emergencies, intersections, passing and being passed, pavement markings, right-of-way rules, and road signs.The Progress Bar will keep track of your score as you go through the test. When you get a question right, it will turn green. If you miss a question, it will turn red. If you get stuck on a question, ask our AI Assistant to elaborate or give you a hint. You can also ask it about any other aspect of driving. If you still miss the question, the AI Assistant will show you the correct answer and an explanation. Not satisfied with your final score? You can retake this practice test as often as you wish until you master the material. Each time, the order of the questions will be randomized.In addition, we have two PDF "cheat sheets" (quick references; not for actual cheating!) for you: "The Top 100 Most Common US DMV Questions" and "The 121 Most Common US Road Signs Questions." You will likely encounter some of these questions on your official knowledge test. Each "cheat sheet" includes the correct answer for each question listed. Please study as many of these as you can.Are you worried that something may still go wrong on the day of the knowledge test? We also offer our own Delaware Permit Test Study Guide to help you prevent any unwelcome surprises. It covers what fees you may have to pay, what documents to take to the DMV, how to stay relaxed yet alert for the test, and other last-minute tips. Pass the first time with Premium You should use _____ when the sun is shining brightly or when a line of vehicles following you could obscure your turn signal light.Headrests should be adjusted so that the head restraint contacts the back of the head. This preventsVehicles approaching a roundabout mustIf you are stopped at a traffic light and another vehicle is approaching you from behind at high speed, you shouldIn heavy rain, your tires can ride on a film of water and lose contact with the road. This hazard is known asIf you are parallel parked on the right side of the street, you should _____ before pulling out into traffic.In Delaware, a steady red arrow signal means thatYou must keep your windshield wipers in good operating condition becauseWhen driving in rural areas, you must pay more attention toAll trucks and buses haveWhat does this sign indicate?What do these yellow pavement markings mean?Work zone signs are usuallyWhich of the following is not a safe situation for passing?The right lane on an expressway should remain open for _____ as much as possible.If traffic from another roadway is merging onto the roadway you are traveling on, you mustWhen making a left turn at an intersection or into an alley or driveway, you must yield the right-of-way toA yield sign indicates that you must slow down and prepare to _____ if a vehicle or pedestrian is approaching from another direction.When making a left or right turn at any intersection, drivers must yield the right-of-way toBefore you enter an intersection, you must look for Experience the Driving-Tests difference Since our foundation in 2010, Driving-Tests.org has led the way in online driver's education, with over a decade of experience. Our dedicated experts, bringing together more than 50 years of collective expertise, have established us as the largest non-governmental organization in the U.S. solely focused on driver education. We go beyond the official manuals, offering unique interactive experiences and support like audio guides and an AI Assistant, to cater to different learning styles and needs. Helping hundreds of thousands to ace their tests, our resources have earned a 4.7-star rating from over 14,500 reviews. Our goal is to make your path to becoming a confident driver as straightforward and effective as possible. Calculating your test results Your test results are readyPass the First Time - GuaranteedBefore you view your test results, discover how you can pass faster with Premium-Real Exam-Like Delaware QuestionsGet 650+ questions seen on the real testIf you don't pass, it costs you nothing97% Premium Users Pass on Their First TryCompare with the average US passing rate of 49% At DMV-Written-Test we strive to help everyone pass their Delaware DMV permit test on their first attempt. Thousands of prospective license holders utilize our practice tests and Delaware DMV cheat sheets every day to help better understand the questions they will face on their written tests. The practice tests and cheat sheets you will find here are based on the 2025 DE driver's license manual. They are available in both English and Spanish. The practice exams are graded instantly with feedback and correct answers provided. The data here is current as of May, 2025. The Delaware practice permit tests and cheat sheets you will find here are perfect for your Delaware Learners Permit, Delaware Driver's License, DE Senior Citizens' Refresher Test, and your DE Driver's License Renewal. All questions are from actual DMV administered written permit tests that are submitted by your peers. The written portion of the official DMV test will cover information that is taken directly from the Delaware Driver Handbook. It is designed to help you safely and effectively operate a motor vehicle. Questions will be based on rules of the road, traffic signs, and driving statutes, as well as information from the Driver Handbook, will be included in the written portion of the official DMV test.You must properly answer 20 of the 25 questions to receive the required passing mark. To help you prepare for your Delaware instruction permit or driver's license, take our DMV practice test.The DMV exam is offered in a variety of languages.Using any kind of testing assistance will result in an automatic fail, and the DMV may take additional action against your driver's license, so stay away from it. 1 2 3 4 5 6 7 8 9 10 11 12 13 14 15 16 17 18 19 20 21 22 23 24 25 26 27 28 29 30 Grade This Section Go to next section To obtain a driver's license in Delaware, you need to pass a written test, vision screening, and road test. You must also provide proof of identity, address, and social security number. Minors need parental consent. A fee is charged for the license. Lastly, first-time drivers must complete a state-approved driver's education course. The cost to acquire a driver's license in Delaware varies based on the type and duration of the license. For a standard 5-year license, the fee is \$40.00. For an 8-year license, the fee is \$64.00. However, these fees can change, so it's recommended to check with the Delaware Division of Motor Vehicles for the most current information. In Delaware, the minimum age to obtain a driver's license is 16 years old. However, before getting a full driver's license, teens must first get a learner's permit at age 15 or 16, and then a provisional license. They must also complete a state-approved driver's education course and meet other requirements. When applying for a driver's license in Delaware, you'll need to provide proof of identity, social security number, and Delaware residency. This could include documents like a certified birth certificate, social security card, and utility bills or rental agreement. If you're under 18, a sponsor such as a parent or guardian must also provide identification. Always check the DMV website for the most current requirements. In Delaware, you can schedule a driving test through the Delaware Division of Motor Vehicles (DMV) website or by calling the DMV office. You will need to provide your learner's permit number, date of birth, and other personal information. Make sure to schedule in advance as slots fill up quickly. In Delaware, to obtain a learner's permit you must be at least 16. First, enroll in a state-approved driver education course. Upon completion, you'll receive a blue certificate which you present at the DMV to get your permit. Then, pass a vision test and written exam. Finally, a parent or guardian must sign the application form. In Delaware, before taking the driving test, learners under the age of 18 must complete at least 50 hours of supervised driving practice. These hours should include 10 hours of night driving. Keep a record of your practice hours in a log book as you'll need to present this at the DMV when scheduling your road test. To prepare for your driving test in Delaware, practice frequently and in various conditions, including night and bad weather. Familiarize yourself with the vehicle you'll use. Study the Delaware Driver Manual thoroughly and consider taking a driver's education course. Remember to practice parallel parking, as it's a required part of the test. Lastly, stay calm and focused during the test. Common errors to avoid during your driving test include: not checking mirrors regularly, failing to signal, speeding, not fully stopping at stop signs or red lights, and improper lane changing. Be aware of these mistakes during your practice hours. Also, ensure you understand and can execute parking maneuvers, as this is a common area of failure. Yes, you can use your personal car for the driving test in Delaware. However, the vehicle must be in good working condition, with all necessary safety features operational. Additionally, you need to provide proof of insurance and registration for the vehicle. Make sure to clean and declutter your car before the test for a good impression. If you don't pass the driving test in Delaware, you'll need to wait at least 10 days before retaking it. You can take the test as many times as needed within a year from the original test date. However, if you fail the test three times, you'll have to wait two years before applying again or complete a state-approved driver education course. Yes, in Delaware, newly licensed drivers under the age of 18 are subject to certain restrictions as part of the Graduated Driver Licensing (GDL) program. They can't drive between 10 p.m. and 6 a.m., unless for work, school, or church-related activities. For the first 6 months, they can't have any passengers except a supervising adult. Afterward, they can have up to one passenger under 21. No, Delaware does not currently offer an online option for applying for a driver's license. Applicants must visit a Delaware Division of Motor Vehicles (DMV) office in person. The process involves completing an application form, taking a vision test, and passing both a written and road test. Remember to bring necessary identification documents and payment for fees. Driving with a learner's permit outside of Delaware depends on the laws of the state you are visiting. While some states may honor an out-of-state learner's permit, others may not. It's essential to check with the Department of Motor Vehicles (DMV) in the state you plan to visit before you drive there with only a Delaware learner's permit. In Delaware, a regular driver's license is valid for eight years. It expires on the licensee's birthday. However, if you are 65 years old or older, the license is valid for four years. Delaware also offers REAL ID compliant licenses, which are also valid for the same duration as a regular driver's license. Yes, it's possible to renew your driver's license online in Delaware. You can do this through the Delaware Division of Motor Vehicles' official website. However, please note that you can only renew online every eight years. In the other years, you will need to renew in person at a DMV office. International students or foreign residents in Delaware must first obtain a Delaware learner's permit. They need to provide proof of legal presence in the U.S., pass a vision test, and a written test on traffic laws and signs. After practicing with the permit, they can take a road test for a full license. It's recommended to contact the local DMV for specific requirements. A learner's permit is a restricted license issued to new drivers, typically teenagers, who are learning to drive. It requires the driver to be accompanied by a licensed adult at all times. On the other hand, a driver's license gives the holder full driving privileges without needing supervision. The holder of a driver's license has passed all necessary tests and met all requirements set by the DMV. Yes, in Delaware, applicants for a driver's license must pass a vision test. The minimum requirement is 20/40 vision in at least one eye, with or without corrective lenses. If you wear glasses or contact lenses for the test, a restriction will be placed on your license requiring you to wear them while driving. Yes, you can use a rental car for your driving test in Delaware. However, you must be listed as an authorized driver on the rental agreement. Additionally, the vehicle must be in safe operating condition and have valid registration and insurance. It's advisable to check with the rental company to ensure they allow their vehicles for driving tests. In Delaware, if you fail the driving test, you must wait at least 10 days before you can retake it. This waiting period is designed to give you time to practice and improve your driving skills. It's important to use this time effectively to prepare for your next attempt. For the DMV written test in Delaware, you need to provide proof of identity (like a birth certificate or passport), proof of Delaware residency (like a utility bill or lease agreement), and your social security card. If you're under 18, you'll also need a signed parental consent form. Be sure to check the DMV's website for the most current requirements. Yes, the Delaware DMV offers the written test in multiple languages other than English. These include Spanish, Chinese, French, Russian, and Vietnamese. However, it's recommended to check with your local DMV office for availability of specific languages. Remember, the road signs test is only in English as per state law. In Delaware, if you fail the DMV written test, you will need to wait a minimum of 10 days before retaking it. This is to allow you time to study and improve your knowledge. It's recommended to review the Delaware Driver Manual thoroughly before attempting the test again. In Delaware, if you fail the DMV written test, you must wait at least 10 days before you can retake it. This waiting period is designed to provide additional time for studying and preparation. It's always advisable to review the areas you struggled with before attempting the test again.