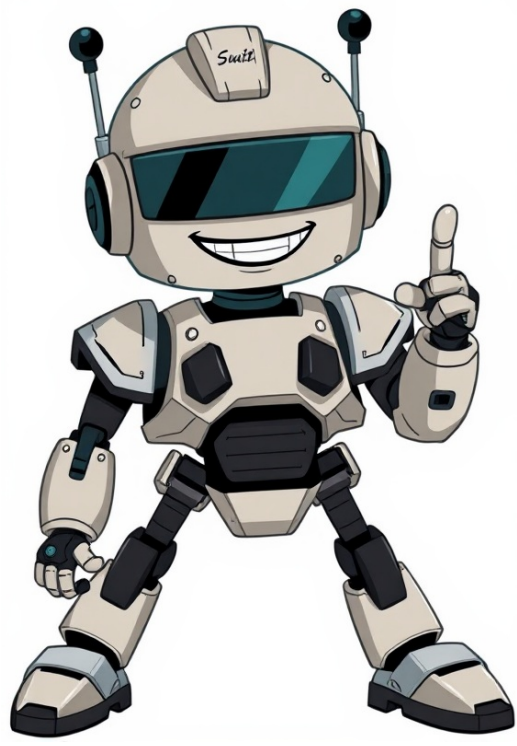


Continue



Telstra.com provides IMAP access to your Telstra.com (Telstra Mail) account, so you can connect to your emails from your desktop email program or your mobile mail app. Posted November 01, 2022 - Updated November 24, 2025 Successful setup of your Bigpond email requires using the right settings. Whilst some applications are smart enough to determine the correct settings themselves, others need to be handled. Follow the steps below to set up your Bigpond hosted email account today. The following settings are confirmed to work for setting up Bigpond hosted email. You may lose emails if you switch from POP to IMAP or vice versa. Do not switch between the two unless you know what you are doing.PORTTYPESERVERNOTESIMAP993SSLimap.telstra.comWe recommend IMAP over POP if you are using many devices to access your Bigpond emails.POP995SSLpop.telstra.comWe recommend POP if you only use one device to access your Bigpond hosted emails.SMTP587START/TLSSmtp.telstra.comMake sure you have set your email client to authenticate your SMTP session.Make sure you have populated your email address as your username, as well as your email password. This often needs to be done in two places once for incoming email (either POP or IMAP) and once for outgoing email (SMTP).If youve used the above settings and your email still doesnt work, try logging into the Bigpond webmail client. If youre unable to login, its highly you might have one of the following problems.Incorrect PasswordMake sure you are definitely using the right password. Try typing it into Notepad, check it visually and copy/paste it into your browser to authenticate.Incorrect UsernameYou should use your Bigpond email address as your username. Double check it to make sure its right. If you still cant login, try visiting the Bigpond Email support page to recover your username or reset your password.Still having problems accessing your Bigpond emails?TechSolvers are an independent IT Support company. We can help you with your Bigpond email connectivity problems no matter where in Australia you are.A typical email setup job only takes 15 minutes and can be done over the internet. Remote sessions are billable at our standard Remote Support rates. Call us on 02-8502-8954 to schedule a booking with one of our technicians. We support setups on all popular mail clients for Apple and Windows computers.Sick of Bigpond email problems?Weve helped some customers move away from Bigpond so they could change NBN providers, however we are now helping others move because they are frustrated by the many ongoing email issues on the Bigpond network over August/September 2020.If youd like help, call us on 02-8502-8954 and well walk you through whats involved. Bigpond email setup using IMAP, POP or SMTP was last modified: February 23rd, 2021 by Steve Thomas Bigpond.com provides IMAP access to your Bigpond.com (Telstra Mail) account, so you can connect to your emails from your desktop email program or your mobile mail app. Posted November 01, 2022 - Updated November 24, 2025 Bigpond email requires specific settings for proper use. Its IMAP server is imap.telstra.com on port 993 with SSL/TLS, while POP3 uses pop.telstra.com on port 995 with SSL/TLS. Outgoing mail is handled by smtp.telstra.com on port 465 with SSL encryption and SMTP authentication. The official login portal is webmail.telstra.com, ensuring secure access. Correct folder and label synchronization enhances email management. Further insights cover troubleshooting, client compatibility, and advanced configuration details.Key TakeawaysUse imap.telstra.com (port 993, SSL) for IMAP to sync emails across devices in real-time.For POP3, configure pop.telstra.com (port 995, SSL) to download emails for offline access.Set smtp.telstra.com (port 465 with SSL/TLS) as the SMTP server for secure outgoing mail.Always enable SMTP authentication with your full Bigpond email address and password for sending emails.Access webmail securely at to avoid phishing and ensure encrypted login.Bigpond Server Configuration DetailsWhere are the essential settings for configuring Bigpond email servers located? These settings are typically found within the email clients account setup or server settings section. Users must input specific server addresses, port numbers, and security protocols to guarantee proper email synchronization. Bigpond email supports both POP3 and IMAP protocols for incoming mail, while SMTP is used for outgoing mail. Correct configuration avoids connection errors and improves performance. It is important to enable SMTP authentication to ensure outgoing emails are sent successfully and securely.Server TypeServer AddressPortIncoming POP3mail.bigpond.com110Incoming IMAPimap.telstra.com993Outgoing SMTPsmtp.telstra.com465SSL/TLS encryption is recommended for security with these ports.How can users access their Bigpond email accounts quickly and securely?The primary method is through the official Bigpond login page, accessible via the Telstra web portal at . This URL directs users to a secure login interface where they can enter their Bigpond email address and password to access their inbox.The page employs HTTPS encryption, ensuring that credentials and data remain protected during transmission. Users should bookmark this URL to avoid phishing risks from fraudulent websites.Additionally, accessing Bigpond email through this link guarantees compatibility with the latest browser security standards and provides a reliable connection to the email service.Avoid using unofficial or third-party login pages to maintain account security and data integrity.For email client synchronization, the recommended method is to configure Bigpond using IMAP settings with server imap.telstra.com on port 993 secured by SSL/TLS, ensuring that email actions are synced across devices.IMAP Server Connection DetailsAfter accessing the Bigpond email account through the secure login page, users may configure their email clients to retrieve messages using the IMAP protocol.IMAP allows synchronization between the email server and multiple devices, enabling real-time access to messages without downloading them permanently.For proper configuration, the following IMAP server connection details are essential:IMAP server address: imap.telstra.comPort number: 993Security type: SSL/TLS enabled for encrypted communicationAuthentication: Requires full email address and passwordThese settings ensure secure and reliable access to Bigpond emails across devices.Users should input these details accurately in their email clients account settings to maintain seamless synchronization and message management.POP3 Server Connection DetailsOne key method for accessing Bigpond emails involves using the POP3 protocol, which downloads messages from the server to a single device. This method is ideal for users who prefer offline access and want to free up server storage.The essential POP3 server connection details for Bigpond include the server address, port number, encryption type, and authentication requirements. These elements guarantee secure and reliable email retrieval.Server Address: pop.telstra.comPort Number: 995 (for SSL/TLS encrypted connections)Encryption: SSL/TLS required to protect data during transmissionAuthentication: Username and password must be provided for accessConfiguring these settings correctly allows seamless email download via POP3.Bigpond SMTP Server ConfigurationWhile POP3 settings enable the retrieval of incoming messages, configuring the SMTP server is necessary for sending emails through Bigpond. The SMTP server governs outgoing mail and requires specific parameters to function correctly.Users must input the correct server address, port, and security protocols to guarantee smooth email transmission. Key configuration points include SMTP server address: smtp.bigpond.comPort number: 465 (SSL) or 587 (TLS)Authentication: Enabled with the full Bigpond email address and passwordSecurity protocol: SSL or TLS must be properly selected to encrypt outgoing emailsProper Bigpond SMTP server configuration ensures reliable email sending, preventing errors and delivery failures. This setup complements the incoming mail settings for a complete Bigpond email experience.WordPress SMTP Plugin SetupThe setup of WordPress SMTP plugins requires accurate configuration of WP Mail SMTP credentials to guarantee reliable email delivery.Additionally, MailPoet SMTP authentication must be properly established to integrate seamlessly with Bigpond email services.These steps are essential for maintaining effective communication through WordPress platforms.Configuring WP Mail SMTP CredentialsHow can users guarantee seamless email delivery through WordPress when using Bigpond email accounts? The key lies in correctly configuring WP Mail SMTP credentials.Users must first install and activate the WP Mail SMTP plugin within WordPress. Then, in the plugin settings, select Other SMTP as the mailer option to manually enter Bigponds SMTP server details.Input the SMTP host as smtp.bigpond.com, set the port to 465, and choose SSL encryption. The Bigpond email address and its corresponding password serve as the SMTP username and password, respectively. Ensuring these credentials are accurate is vital for authentication.Finally, save the settings and perform a test email to verify successful configuration. Proper setup eliminates common email delivery failures associated with default WordPress mail functions.MailPoet SMTP Authentication SetupWhere does one begin when setting up MailPoet SMTP authentication for WordPress? The process starts by accessing the MailPoet plugin settings within the WordPress dashboard. Under the Sending tab, users select SMTP as the mailing method.Next, the SMTP server details for Bigpond must be entered accurately: the server address (usually smtp.bigpond.com), port number (commonly 587 for TLS), and encryption type (TLS). Authentication requires the users full Bigpond email address and password.After inputting these credentials, it is vital to save the settings and send a test email to verify successful configuration. Proper setup guarantees reliable email delivery through Bigponds SMTP servers, enabling WordPress sites using MailPoet to send newsletters and notifications effectively without encountering authentication errors.Thunderbird IMAP Sync SetupWhen configuring Bigpond email on Thunderbird, setting up IMAP synchronization guarantees messages stay consistent across all devices.To begin, the user must select IMAP as the incoming server type. The incoming mail server should be set to imap.telstra.com, with port 993 and SSL/TLS enabled for secure communication.The outgoing SMTP server is smtp.telstra.com, using port 465 with SSL/TLS enabled and requiring authentication.The username for both incoming and outgoing servers is the full Bigpond email address.Thunderbird will then synchronize folders such as Inbox, Sent, and Drafts, reflecting changes in real time.This setup ensures seamless email management and access, maintaining message integrity whether on desktop or mobile platforms.Bluelmail Two-Factor Authentication SetupAfter configuring IMAP synchronization on Thunderbird for Bigpond email, attention shifts to enhancing account security through Bluelmails two-factor authentication.Bluelmail supports two-factor authentication (2FA) by integrating with time-based one-time password (TOTP) apps such as Google Authenticator or Authy. To enable 2FA, users must first access their Bigpond account security settings via the Telstra website, where they can activate two-step verification.Once enabled, Bluelmail prompts for a verification code in addition to the password during login. This extra layer considerably reduces unauthorized access risks by requiring a temporary code generated on a trusted device.Users should ensure their authenticator app is correctly synced and backup codes are stored securely to prevent lockouts. This setup strengthens Bigpond email protection within Bluelmail without altering standard IMAP or SMTP configurations.Outlook OAuth2 Authentication SetupA secure and streamlined method for accessing Bigpond email in Outlook is through OAuth2 authentication. This modern protocol enhances security by eliminating the need for storing or transmitting passwords directly. Instead, Outlook requests an access token from the authentication server, allowing safe and authorized access to the email account.To set up OAuth2 in Outlook, users must ensure the latest version of Outlook is installed, supporting modern authentication. This method enhances security by eliminating the need to store or transmit passwords directly. Users must first select Bigpond as their email provider within Mailsprings account setup. The client then redirects to Telstras OAuth2 authorization page, where users grant Mailspring permission to access their email data securely.Upon successful authentication, Mailspring receives an access token used to manage incoming and outgoing mail via IMAP and SMTP protocols. This token refreshes automatically, ensuring uninterrupted connectivity.Configuring OAuth2 in Mailspring for Bigpond streamlines login procedures, minimizes security risks, and supports seamless email synchronization without manual intervention or password updates, aligning with modern email security standards.Postbox Manual IMAP Sync SetupWhile OAuth2 offers a streamlined and secure method for synchronizing Bigpond email in Mailspring, some users prefer configuring their accounts manually in other clients. Postbox supports manual IMAP setup, requiring specific server settings for successful synchronization.Users must enter the incoming mail server as imap.telstra.com with port 993 and enable SSL/TLS for encryption. The outgoing SMTP server is smtp.telstra.com, using port 465 with SSL/TLS and authentication enabled.Login credentials consist of the full Bigpond email address and password. After inputting these details, Postbox will establish a connection to sync emails, folders, and statuses directly with the Bigpond server.This manual setup guarantees greater control over the connection process and is suitable for those who prefer traditional authentication methods over OAuth2.Sendblaster SMTP and IMAP SyncSendblaster enables users to configure both SMTP and IMAP settings for seamless Bigpond email synchronization. By inputting the correct server detailsIMAP server as smtp.bigpond.com with port 993 using SSL, and SMTP server as smtp.bigpond.com with port 465 also using SSLusers guarantee secure and reliable email sending and receiving.Authentication requires the full Bigpond email address and password. Proper synchronization allows Sendblaster to manage incoming messages efficiently while facilitating outgoing mail delivery through the SMTP server.This dual configuration is essential for maintaining consistent communication flow and avoiding common issues such as failed message sending or incomplete inbox updates. Overall, Sendblasters support for these protocols offers Bigpond users a streamlined email management experience within the software.MailJerry IMAP Folder SynchronizationEffective email management extends beyond configuring SMTP and IMAP servers; synchronizing IMAP folders plays a significant role in maintaining organized correspondence. MailJerry offers robust IMAP folder synchronization capabilities that guarantee real-time mirroring between the email client and Bigponds servers.This synchronization allows users to access the same folder structure and message statusesuch as read, unread, or flaggedacross multiple devices seamlessly. MailJerrys synchronization process supports standard folders including Inbox, Sent, Drafts, and custom user-created folders, maintaining consistency in email organization.Additionally, it handles folder hierarchy efficiently, preventing duplication or data loss during synchronization. By leveraging MailJerrys IMAP folder sync features, users benefit from streamlined email access and improved productivity, facilitating effective communication within the Bigpond email environment.Clean.email Folder Label SynchronizationHow does Clean.email enhance folder label synchronization for Bigpond users?Clean.email offers a streamlined approach to managing folder labels by automatically organizing emails into user-defined categories. It synchronizes labels across devices by interfacing with Bigponds IMAP system, ensuring consistent folder structures.This synchronization helps maintain order without manual intervention, reducing clutter and improving email retrieval efficiency. Clean.email updates label changes in real time, reflecting adjustments made on one device to all others connected to the Bigpond account.Its compatibility with Bigponds email infrastructure allows accurate mapping between server-side folders and local labels. Consequently, users experience a unified organizational system that simplifies email management, supporting better productivity and a coherent workflow across multiple platforms.Apple Mail IMAP Folder SyncWhy is seamless IMAP folder synchronization essential for Apple Mail users managing Bigpond accounts? It ensures consistent access to emails, drafts, sent items, and deleted messages across all devices.Apple Mail relies on accurate IMAP folder mapping to reflect Bigponds server structure, allowing users to organize and retrieve emails efficiently. Proper synchronization prevents discrepancies such as missing messages or unsynced folder changes, which can disrupt workflow.To optimize this, users must configure Apple Mails IMAP settings to align with Bigponds server folders, often by subscribing to relevant folders within the app. This setup facilitates real-time updates, preserving email integrity and enhancing user experience.Common Bigpond Email ErrorsWhile proper IMAP folder synchronization enhances the Bigpond email experience, users may still encounter various errors that disrupt communication. Common issues include login failures due to incorrect username or password, server connection timeouts, and authentication errors.Misconfigured port numbers or security settings can prevent sending or receiving emails. Users may also face issues with email clients failing to sync folders correctly, leading to missing or duplicated messages.Occasionally, server outages or maintenance can cause temporary disruptions. To resolve these errors, verifying account credentials, confirming correct server settings (IMAP, POP3, SMTP), and ensuring stable internet connectivity are essential steps.Additionally, updating email client software and checking for service status updates can help mitigate recurring problems efficiently.Several related email configuration guides provide valuable information for optimizing Bigpond email setup across various devices and platforms. These guides cover step-by-step instructions for configuring Bigpond email on popular email clients such as Microsoft Outlook, Apple Mail, and Mozilla Thunderbird.Additionally, there are specific guides addressing mobile device configurations for iOS and Android, ensuring seamless synchronization via IMAP or POP3 protocols.Troubleshooting resources focus on resolving common connectivity issues, authentication errors, and SMTP server problems.Security-focused guides emphasize enabling SSL/TLS encryption for secure email transmission.Moreover, integration tutorials help users link Bigpond email with third-party services and apps to enhance productivity.Collectively, these related guides complement the core Bigpond email settings, assisting users in achieving a reliable and efficient email experience tailored to their chosen platforms.Frequently Asked QuestionsHow Do I Recover a Forgotten Bigpond Email Password?To recover a forgotten Bigpond email password, one must visit the Telstra password reset page, enter the registered email address or phone number, follow verification steps, then create a new password to regain account access securely.Can I Access Bigpond Email on My Mobile Device?Bigpond email can be accessed on mobile devices by configuring the email app with the appropriate server settings. Both IMAP and POP3 protocols are supported, ensuring synchronization and retrieval of emails on smartphones and tablets.What Are the Storage Limits for Bigpond Email Accounts?Bigpond email accounts typically offer storage limits around 1GB to 5GB, depending on the specific plan and subscription. Users should verify their current storage capacity through their account settings or service provider for precise details.How Do I Set up Email Forwarding in Bigpond?To set up email forwarding in Bigpond, the user must log into their webmail, access Settings or Options, locate the forwarding section, enter the desired forwarding address, and save changes to activate email redirection automatically.Is There a Bigpond Email App for Smartphones?Bigpond does not offer a dedicated email app for smartphones. Users typically access Bigpond email through standard mobile email clients like Apple Mail, Gmail, or Outlook, configuring them with Bigponds IMAP or POP3 settings for seamless synchronization.Wrapping Up and Final VerdictIn summary, understanding Bigponds email settingsincluding IMAP, POP3, and SMTP configurationsis essential for seamless email management. Proper server setup ensures reliable sending and receiving of messages across devices. Synchronization features like folder labeling enhance organization, particularly in clients such as Apple Mail. Awareness of common errors facilitates timely troubleshooting. Following these guidelines helps users maintain efficient access to their Bigpond accounts and supports smooth communication.About The AuthorIn todays hyper-connected world, email continues to be a vital communication tool for individuals and businesses alike. One of the most recognized email services in Australia is Bigpond, now operating under the Telstra brand. While Telstra continues to offer solid internet and email services, many usersespecially those setting up their email accounts on new devices or email clientsoften find themselves wondering: What are the correct server settings for Bigpond email?Whether youre configuring your Bigpond email on Outlook, Apple Mail, Android, or an iPhone, using the right server settings ensures that your emails are sent and received without a hitch. This blog post serves as your comprehensive guide, helping you understand what the Bigpond email server settings are, how to configure them on different platforms, and how to troubleshoot common issues.Bigpond is a long-standing Australian ISP and email provider that was acquired by Telstra. Although the branding now generally falls under Telstra Mail, many users still refer to it as Bigpond. As a Telstra customer, you may receive Bigpond email address ending in @bigpond.com@bigpond.net.au@telstra.comThese email addresses are widely used and can be accessed through webmail (via browser) or configured into popular email clients such as Microsoft Outlook, Apple Mail, or mobile apps.Email server settings are important for the smooth operation of your email account. These settings tell your email app how to access the server that stores your messages (incoming) and how to send out new messages (outgoing). If the settings are incorrect, your app may not be able to send or receive emails properly.Each email provider, including Bigpond, has specific configurations for incoming and outgoing mail servers. These include:Server addresses (like imap.telstra.com or smtp.telstra.com)Port numbersEncryption methods (SSL/TLS)Authentication detailsIncorrect settings can lead to errors like:Unable to connect to the serverEmail sending failedAuthentication errorHere are the latest and correct server settings for Bigpond (Telstra) email:Incoming Mail Server (IMAP)Server: imap.telstra.comPort: 993Security/Encryption: SSL/TLSAuthentication: Yes (Use full email address and password)Incoming Mail Server (POP3)Server: pop.telstra.comPort: 995Security/Encryption: SSL/TLSAuthentication: YesOutgoing Mail Server (SMTP)Server: smtp.telstra.comPort: 465Security/Encryption: SSL/TLSAuthentication: Yes (same credentials as incoming mail)Username and PasswordUsername: Your full Bigpond email address (e.g., )Password: Your Bigpond email passwordWhen setting up your Bigpond email, youll have to choose between IMAP and POP3. Understanding the difference is important for the right setup:IMAP (Recommended)Stores emails on the serverAllows synchronization across multiple devicesIdeal for users who access email from different locations/devicesPOP3Downloads emails from the server to your deviceEmails are continuously removed from the server after downloadSuitable if you only use one device and prefer local storageFor most users today, IMAP is the preferred choice, especially if youre using smartphones, tablets, and multiple computers to check email.A. Microsoft Outlook (Windows or Mac)Navigate to File > Add Account after opening Outlook.Enter your Bigpond email address and click Connect.Choose either IMAP or POP.Enter server settings:Incoming server: imap.telstra.com (IMAP) or pop.telstra.com (POP)Outgoing server: smtp.telstra.comUse port numbers:IMAP: 993 (SSL)POP3: 995 (SSL)SMTP: 465 (SSL)Enter your username (full email) and password.Click Next, test settings, and finish setup.B. Apple Mail (Mac)Open System Preferences > Internet Accounts.Click Add Account and choose Other Mail Account.Enter your name, email address, and password.Choose IMAP or POP3 and manually enter:Incoming Mail Server: imap.telstra.com or pop.telstra.comOutgoing Mail Server: smtp.telstra.comComplete authentication and save settings.C. iPhone/iPad (iOS)To add an account, navigate to Settings > Mail > Accounts.Select Other, then choose Add Mail Account.Enter your name, email address, password, and description.Choose IMAP or POP and enter:Incoming server: imap.telstra.com or pop.telstra.comOutgoing server: smtp.telstra.comUse ports: 993 (IMAP), 995 (POP), 465 (SMTP).Tap Save and wait for the verification.D. Android Devices (Samsung, Pixel, etc.)Open your Email app.Choose Add Account > Other.Enter your Bigpond email and password.Select Manual Setup.Choose IMAP or POP3:IMAP: imap.telstra.com, Port 993, SSLPOP3: pop.telstra.com, Port 995, SSLFor SMTP server: smtp.telstra.com, Port 465, SSLConfirm authentication and finish setup.Despite proper settings, users may still face issues. Here are some tips to resolve them:Problem-1: Cant Send EmailsEnsure SMTP settings are correctMake sure your ISP isnt blocking port 465Verify that Outgoing server requires authentication is checkedProblem-2: Password ErrorsDouble-check for typos in your email or passwordTry logging in via Telstra Webmail to confirm credentialsReset your password if necessaryProblem-3: Sync IssuesUse IMAP for proper synchronization across devicesCheck internet connectivityEnsure background data is enabled on mobile devicesProblem-4: Certificate or SSL WarningsEnsure youre using SSL/TLSUpdate your email client to the latest versionManually accept or trust the certificate if promptedProblem-5: Account Locked or SuspendedVisit Telstras support page to check service statusTo unlock or recover your account, get in touch with Telstra support.Setting up your Bigpond (Telstra) email doesnt have to be difficult, as long as you use the correct server settings. With the detailed instructions provided in this guide, you can now confidently configure your email account on any device, troubleshoot issues, and understand how IMAP and POP3 affect your email experience.Remember:Use IMAP for multi-device synchronization.Always enable SSL/TLS for secure connections.Double-check all server addresses and port numbers.If you still run into problems, dont hesitate to reach out to Telstras support for assistance. Email might be an old technology, but its still an indispensable oneand with the right settings, your Bigpond email will keep working smoothly wherever you go. Publisher: Telstra Name: Set up Telstra Mail on Outlook | Telstra Copyrighted By: Telstra Family Friendly: Yes Language: English

Advantage of powder coating. Pros and cons of powder coating. Advantages of powder coating over painting. Disadvantages of powder coating.

- who is raziel in the bible
- https://bilmatbasim.com/userfiles/file/pafogipidadap.pdf
- xuxa
- fexifute
- https://eeswykecottage.com/users/UserFiles/File/samokamuru_gufizibioxunis_1ezaf.pdf
- http://dringungkagurinchenpaibarlring.org/upload/userfiles/files/winopajefexxus_zubabi_gadodipozo.pdf
- kicizipa
- jotuse
- http://mtcongghiepxanh.com/.\pload/fckimagesfile/14633510238.pdf